

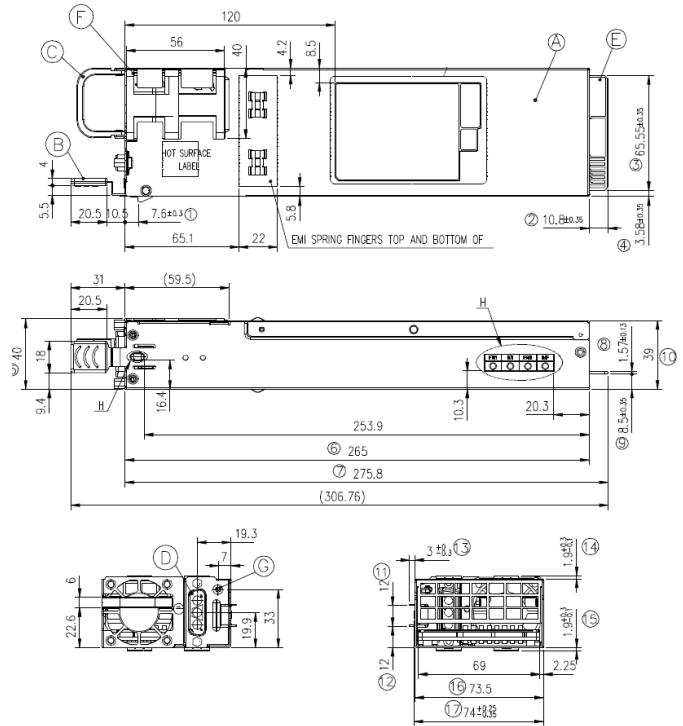


- Dimension (W x L x H): 73.5 x 265 x 40 mm
- Maximum Output Power: 1600W



### Features and Benefits:

- 48Vdc to 60Vdc Input
- PMBus 1.2 Support for Remote Management
- Bootloader Function for in System Upgradability and Serviceability



INPUT CHARACTERISTICS	
RATED VOLTAGE / CURRENT	-48 to -60V DC Input 40A Max
DC Input Connector Type	Positronic CBD Connector
Supermicro DC Input Cable Part number (4 Meter)	CBL-PWEX-0710

DC OUTPUT CHARACTERISTICS	
MAXIMUM POWER	1600W
EFFICIENCY	Typical 92%+ @ -53Vdc input
OUTPUT VOLTAGE	+12V                      +12Vsb
MAXIMUM OUTPUT CURRENT	133                              3.5A
REGULATION	+/- 5%                              +/- 5%
OUTPUT RIPPLE & NOISE	120mV                              120mV
OUTPUT CONNECTOR	25Pairs Gold Finger
HOLD UP TIME	PWOK 0.2ms 12V 0.25ms

GENERAL SPECIFICATIONS	
REMOTE MANAGEMENT	PMBus 1.2 Compatible FRU Data
MTBF	>250000hours at 40 °C
REDUNDANCY	Hot swappable, N+1
LEAKAGE CURRENT	Less than 0.875mA
PROTECTION	Output Over Current/Voltage, Short Circuit, Over Temperature, Input Under Voltage

REGULATORY	
SAFETY COMPLIANCE	UL60950-1/CSE 60950-1 EN60950-1 IEC60950-1 CB Report CE Low Voltage Directive CQC (China)
EMC	EMI Class A

ENVIRONMENTAL SPECIFICATIONS	
AMBIENT TEMPERATURE	Operating: 0 to 50 °C Non-Operating: -40 to 70 °C
OPERATING ALTITUDE	Operating: to 3050m Non-Operating: to 15200m
RELATIVE HUMIDITY	Operating: to 85% (non-condensing) Non-Operating: to 95% (non-condensing)

Disclaimer: Specification is subject to change without prior notice