

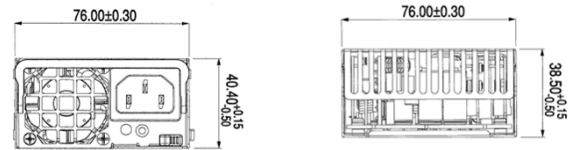
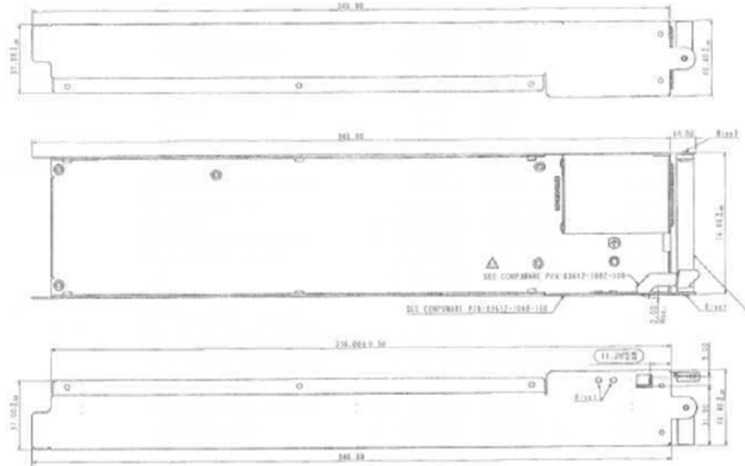
PWS-902-1R 900W 1U Redundant Power Supply Specification



Features and Benefits:

- 900W 1U Redundant
- Remote Management support with SMBus
- Hot-swappable

- Dimension (W x L x H): 76 x 360 x 40 mm
- Maximum Output Power: 900W



INPUT CHARACTERISTICS

RATED VOLTAGE / CURRENT	100-240Vac 11A-4.5A
RATED FREQUENCY	50-60HZ
INRUSH CURRENT	Less than 30A
POWER FACTOR	0.98 @ max load (Typical)

DC OUTPUT CHARACTERISTICS

MAXIMUM POWER	900W	
EFFICIENCY	Typical 89%	
VOLTAGE	+12V	+5Vsb
MAXIMUM CURRENT	57A	4A
REGULATION	+/- 5%	+/- 5%
RIPPLE & NOISE	120mV	50mV
OUTPUT CONNECTOR	Gold Finger (19 pair connector)	
HOLD UP TIME	PWOK 15ms at 75% of max Loading 16V 12ms at 75% of max loading	

GENERAL SPECIFICATIONS

REMOTE MANAGEMENT	SMBus FRU Data
MTBF	>100,000hours at 25 °C
REDUNDANCY	Hot swappable, N+1
LEAKAGE CURRENT	<0.85mA@264Vac for single PSU
PROTECTION	OCP, OVP, Short Circuit, Over Temperature, Input Under Voltage

REGULATORY

SAFETY COMPLIANCE	UL60950-1/CSE 60950-1 EN60950-1 IEC60950-1 CB Report CE Low Voltage Directive BSMI CCC (2000m)
EMC	EMI Class A

ENVIRONMENTAL SPECIFICATIONS

AMBIENT TEMPERATURE	Operating: 0 to 50 °C Non-Operating: -40 to 70 °C
OPERATING ALTITUDE	Operating: to 3023m Non-Operating: to 10580m
RELATIVE HUMIDITY	Operating: 20% to 90% (non-condensing) Non-Operating: 5% to 95% (non-condensing)

Disclaimer: Specification is subject to change without prior notice