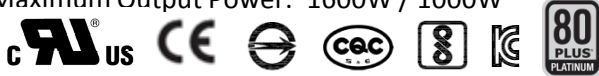




- Dimension (W x L x H): 73.5 x 185 x 40 mm
- Maximum Output Power: 1600W / 1000W



INPUT CHARACTERISTICS

RATED VOLTAGE / CURRENT	100-127VAC / ~13.8A 200-240VAC / ~9.6A 240VDC/8.5A only for China
RATED FREQUENCY	47-63HZ
INRUSH CURRENT	Less than 30A
POWER FACTOR	>0.98

DC OUTPUT CHARACTERISTICS

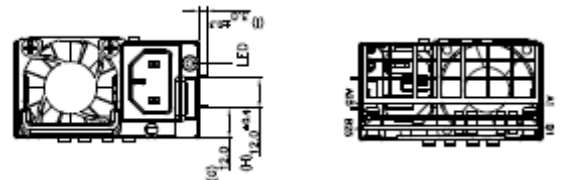
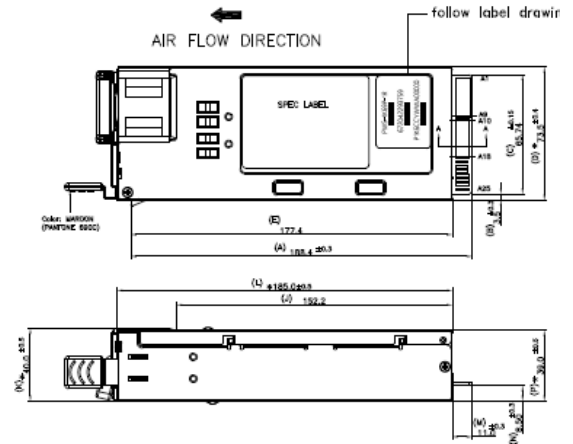
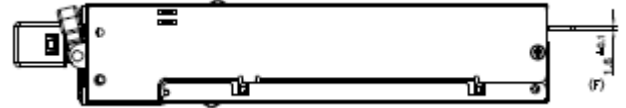
MAXIMUM POWER	1000W @ 100-127Vac 1600W @ 200-240Vac 1600W@ 240Vdc
EFFICIENCY	80Plus Platinum Typical 94%+ @ 230Vac
VOLTAGE	+12V +12Vsb
MAXIMUM CURRENT	83A (1000W) 2.1A 132A (1600W)
REGULATION	+/- 5% +/- 5%
RIPPLE & NOISE	200mV 200mV
OUTPUT CONNECTOR	Gold Finger
HOLD UP TIME	PWOK 10ms at 70% Loading 12V 11ms at 70% loading

GENERAL SPECIFICATIONS

REMOTE MANAGEMENT	PMBus 1.2 Compatible FRU Data
MTBF	>250,000 hours at 75% load and 40 °C
REDUNDANCY	Hot swappable, N+1
LEAKAGE CURRENT	0.875mA Max
PROTECTION	Output Over Current/Voltage, Short Circuit, Over Temperature, Input Under Voltage

Features and Benefits:

- Platinum 94%+ Efficiency
- PMBus 1.2 Support for Remote Management
- Flexible Redundancy Control
- Bootloader Function for in System Upgradability and Serviceability



REGULATORY

SAFETY COMPLIANCE	UL60950-1/CSA 60950-1 EN60950-1 IEC60950-1 CB Report CE Low Voltage Directive BSMI CQC BIS KC
EMC	EMI Class A

ENVIRONMENTAL SPECIFICATIONS

AMBIENT TEMPERATURE	Operating: 0 to 50 °C Non-Operating: -40 to 70 °C
OPERATING ALTITUDE	Operating: to 5000m Non-Operating: to 15200m
RELATIVE HUMIDITY	Operating: to 85% (non-condensing) Non-Operating: to 95% (non-condensing)